

# SH-170

## SOLAR LED PAVERS

### Housing

Diameter : 6.05"x6.05" | Height : 2.1" | Weight : 2.42 lbs

### Material

Housing: SUS304 stainless steel, cast aluminum  
Lens: High transmission polycarbonate lens

### Operation Time

The solar LED bollard can operate for a minimum of 12 hours per day (dusk to dawn), or 4-8 hours under overcast weather conditions

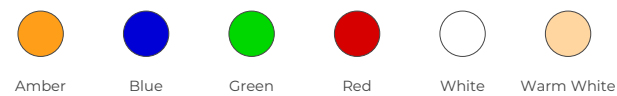
### Required Charge Time

Required charge time is 6 hours under direct sunlight, or 7-8 hours under overcast weather conditions for full battery capacity

### Rim Finish



### Color Temperature



### Warranty

3 Year limited warranty

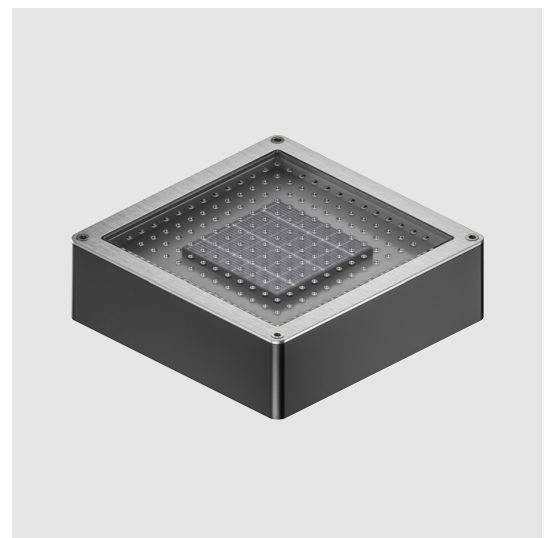
### Listing



Architectural, functional and green renewable.

Meteor Solar LED Pavers blend efficient solar panels with a reliable ultracapacitor power solution, delivering eco-friendly and lasting illumination.

Designed for minimal maintenance, these lights come in various square shapes, suitable for pathways and outdoor spaces. The anti-skid, wire-free, plug-and-play installation ensures a straightforward and practical lighting solution for your surroundings.



SPECIFICATION SHEET

**SH-170** SOLAR LED  
PAVERS



**SPECIFICATION**

PROJECT NAME

DATE

CATALOG #

QUANTITY

<input type="text"/>	MODEL	<b>SH170C</b> Product	<b>SH170B</b> Battery Sample
<input type="text"/>	CCT	<b>AMB</b> Amber <b>RED</b> Red	<b>BLU</b> Blue <b>WHT</b> White / 5500-6000K <b>GEN</b> Green <b>WAM</b> Warm White / 2800-3000K
<input type="text"/>	RIM FINISH	<b>BS</b> Brushed Stainless Steel <b>BR</b> Brass	<b>PS</b> Polished Stainless Steel <b>SS</b> SUS316 Stainless Steel
<input type="text" value="HS"/>	HOUSING	<b>HS</b> Housing and Anchor Plate Included	

**TECHNICAL DETAILS**

**Electrical**

- Operating Temperature: -4°F~140°F
- Storage Temperature: -13°F~176°F
- Ultracapacitor power storage

**LED Features**

- Color Temperature: Amber, Blue, Green, Red, White, Warm White

**Optics**

- High transmission polycarbonate lens

**Operational**

- The solar LED bollard can operate for a minimum of 12 hours per day (dusk to dawn), or 4-8 hours under overcast weather conditions
- Required charge time is 6 hours under direct sunlight, or 7-8 hours under overcast weather conditions for full battery capacity
- Light sensitive auto on/off switch

**Housing**

- Diameter: 6.05"x6.05"
- Height: 2.1" (SH-170C, SH-170B)
- Material: SUS304 stainless steel, cast aluminum
- Rim Finish: Brushed/polished stainless steel; optional: SUS316 stainless steel/brass
- Weight: 2.42lbs
- Compressive Strength: Maximum 9,902 lbs/4,456 kgs (Non Drive-Over rated)

**Warranty**

- 3-year limited warranty

**Listing**

- IP68
- FCC
- CE
- RoHS
- USGBC

**PERFORMANCE SUMMARY**

Emergency Pack Lumen Output Table

COLOR	Amber	Blue	Green	Red	White	Warm White
LUX(AVERAGE)	25lx	25lx	50lx	65lx	35lx	30lx

**DIMENSIONS**

