

LANCE 6

SPECIFICATION SHEET
SINGLE SIDED

ARCHITECTURAL GRADE OUTDOOR WALL LUMINAIRE

Housing

Diameter : Ø6.4" | Height : 15" | Weight : 13 lbs

Material

Housing: Extruded Aluminum

Lens: Tempered Glass

Power Input

30W, 50W | 120-277V

Lumen Output

3,005 lm (30W), 5,010 lm (50W)

Dimming

Standard 0-10V: Dims to 10%

Superior 0-10V: Dim to 1%

DMX: High resolution dims to 0.1%

Color Quality

CRI 85, CRI 93

Rated Life

> 100,000 Hours (L70)

Finish



Black



White



Gray



Bronze

Color Temperature



2700K



3000K



3500K



4000K

Optics



40°



60°



Wide

Warranty

5 Year limited warranty

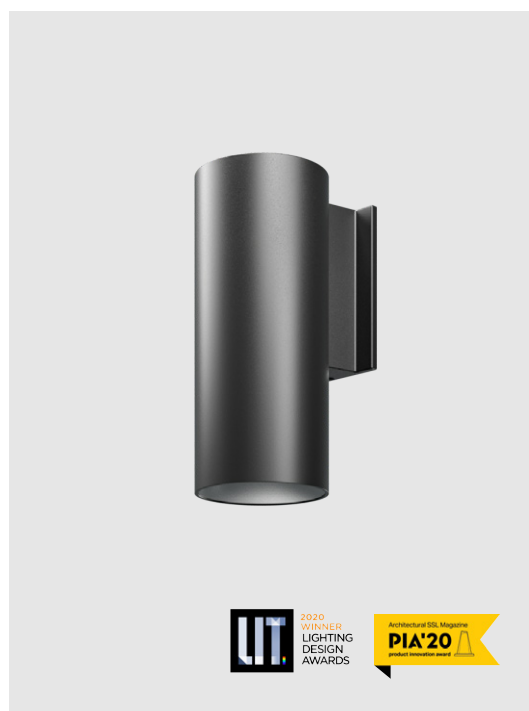
Listing



Designed for Timeless Exteriors

This 6-inch round wall mount cylinder boasts an impressive lumen range of 3,005 to 5,010 lm, providing exceptional illumination while making a bold architectural statement.

The IP65 rated Lance 6 ensures durability and reliability in all outdoor environments, making it the ideal choice for accentuating architectural features and enhancing outdoor facades.



SPECIFICATION

PROJECT NAME	<input type="text"/>	DATE	<input type="text"/>
CATALOG #	<input type="text"/>	QUANTITY	<input type="text"/>

The product configurator function on this page works only with the latest version of Chrome or Adobe Acrobat Reader.

<input type="text" value="LA6-SS"/>	MODEL	LA6-SS Lance 6 Single Sided		
<input type="text" value="D"/>	DIRECTION	D Down		
<input type="text"/>	WATTAGE	30 30W	50 50W	
<input type="text"/>	CCT / CRI	278 2700K / CRI 85 309 3000K / CRI 93 408 4000K / CRI 85	279 2700K / CRI 93 358 3500K / CRI 85	308 3000K / CRI 85 359 3500K / CRI 93
<input type="text" value="UNV"/>	VOLTAGE	UNV 120 – 277V		
<input type="text"/>	DIMMING	NOD Non-Dimming DMX¹ DMX dims to 0.1%	STV Standard 0-10V dims to 10%	SPV Superior 0-10V dims to 1%
<input type="text"/>	BEAM ANGLE	40 40°	60 60°	WD² Wide
<input type="text"/>	FINISH	BLK Black BRZ Bronze	WHT³ White	GRY Gray
<input type="text"/>	ACCESSORIES	FW^{4,5} Forward Throw	WW^{4,6} Wall Wash 20°	LL^{4,6} Linear Lens
<input type="text"/>	RATING	OUT⁷ Outdoor Rating	NAT⁸ Natatorium Rated	MAR⁹ Marine Rating

CLEAR FORM

¹ DMX does not feature XLR or RJ45 sockets; connections are hard-wired using three DMX wires
² Please factor in change in lumen output with WD -12%
³ Option is not compatible with Marine Rating
⁴ Please factor in change in lumen output of -20%
⁵ Not compatible with 60° and WD option
⁶ Not compatible with WD option
⁷ Outdoor Rating: Coating and wiring will be changed to high UV resistant and corrosion resistant materials for long-term operation in outdoor environments
⁸ Natatorium Rating: Coating and sealant will be changed to high corrosion resistant materials to prevent damage from long-term exposure to chlorine vapors
⁹ Marine Rating: Uses high corrosion-resistant materials for the coating and sealant to prevent damage from long-term exposure to saltwater environment

TECHNICAL DETAILS

Electrical

- 3,005 lm (30W)
- 5,010 lm (50W)
- Power Input: Universal (120/277V)
- Operating Temperature: 14°F~104°F
- Surge Protection: Built-in is 2.5KV

LED Features

- Color Temperature: 2700K, 3000K, 3500K, 4000K
- CRI 85, CRI 93
- Long lasting LED luminaire tested under TM21 lumen maintenance L70 @ 100,000 Hrs

Optics

- Precision molded high transmittance clear PC lens
- Beam Angle: 40°, 60°, Wide

Advanced Dimming

- Proprietary VX Driver™ is incorporated to all dimming options for video flicker-free lighting
- Standard 0-10V: Dims to 10%
- Superior 0-10V: Dim to 1%
- DMX: High resolution dims to 0.1% (Supports ANSI E1.20 RDM protocol)

Housing

- Diameter: Ø6.4"
- Height: 15"
- Material: Extruded Aluminum, Tempered Glass
- Weight: 13 lbs

Warranty

- 5-year limited warranty

Listing

- ETL Wet Location Listed
- CE
- FCC
- IP 65

PERFORMANCE SUMMARY*

Delivered Lumens				
CCT/WATTAGE	2700K	3000K	3500K	4000K
30W	2,660lm	2,890lm	2,960lm	3,005lm
50W	4,435lm	4,810lm	4,935lm	5,010lm

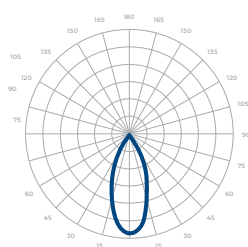
Current Consumption		
WATTAGE / VOLT	120V	277V
30W	0.275A	0.12A
50W	0.46A	0.2A

*Tolerance ±8%

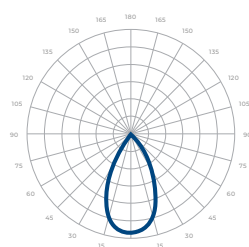
* For specifications requiring a CRI of 93, apply a 0.75 multiplier to the lumen output values listed.

PHOTOMETRICS

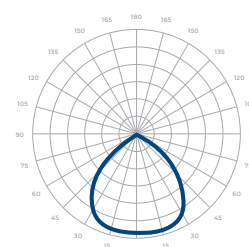
Below is a typical photometric representation of the Lance 6 fixture. Please download IES files to ensure exact photometric value.



40°



60°



Wide

DMX REQUIREMENTS

The Lance 6 fixture with DMX is a **single channel dmx** unit. When placing an order, please indicate DMX address. (The DMX address will be listed on the back of the fixture). Do not connect more than 32 fixtures per DMX daisy chain.

The fixture can be connected 2 DMX positive / negative wires for connection. DMX cables **are not** included; please refer to compatible DMX cabling list for more information. The final fixture on each daisy chain should be terminated by the use of a DMX terminator purchased from a 3rd party or from Meteor.

DMX Address	
Fixture	Downlight (ex. X+1)
#1	1
#2	2
#3	3

COMPATIBLE DMX CABLING LIST

DMX uses a cable consisting of two twisted pairs plus a shield to carry data. The cable must be specifically impedance matched for the digital DMX signal, meaning that microphone cable or other non-rated cable **must not be used to carry DMX**. Network cable (Cat5, 5e or 6 cable) may be used to carry DMX in an installation; however special consideration must be given to shielding and termination. Under no circumstances should solid core cable like Cat5 be terminated into a screw down connector.

Meteor recommends the use of Belden 9729 or Belden 9841 for DMX installation. Belden 9729/9841 is a two pair cable, which allows for a spare pair for 'out and back' type terminations if needed.

DIMENSIONS

