

ATRIA 4

SPECIFICATION SHEET
WARM DIM

QUIET CYLINDER WITH PRISMATIC LENS

Housing

Diameter : Ø4.8" | Height : 12.6" | Weight : 8 lbs

Material

Housing: High Pressure Die-Cast Aluminum
Lens: Clear Polycarbonate

Power Input

15W, 25W, 35W, 45W | 120 or 277V

Lumen Output

1,600 lm (15W), 2,200 lm (25W), 2,550 lm (35W), 3,000 lm (45W)

Dimming

Superior 0-10V : Dims to 1%
DMX : High resolution dims to 0.1%

Color Quality

CRI 85+

Rated Life

> 60,000 Hours (L70)

Finish



Black



White

Color Temperature



ColorFlip™ Warm Dim
1900K ~° 3000K

Optics



40°



60°



Wide

Mounting



Stem
Mount



Adjustable
Cable



Wall
Mount



Yoke
Mount



Surface
Mount

Warranty

5 Year limited warranty

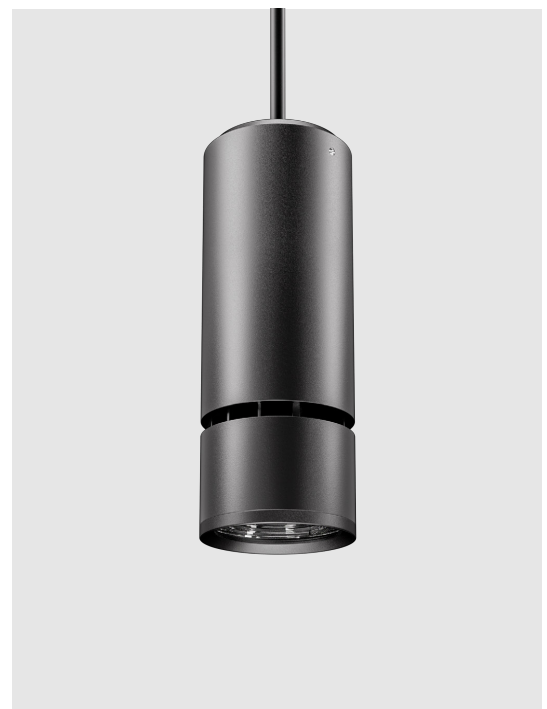
Listing



Masterfully engineered and aesthetically refined.

The Atria 4 is a high-performing cylinder for mixed applications. The cylinder is compatible with our ColorFlip™ color-changing technologies, and feature decorative options in the glow ring and mid-lit reveal.

A prismatic lens offers superior light transmission and minimizes glare.



METEOR

meteor-lighting.com

SPECIFICATION

PROJECT NAME

DATE

CATALOG #

QUANTITY

AS4	MODEL	ATRIA 4		
	WATTAGE	15 15W 45 45W	25 25W	35 35W
WDIM	CCT / CRI	WDIM 1900K-3000K		
UNV	VOLTAGE	UNV 120 – 277V		
	DIMMING	SPV Superior 0-10V dims to 1%	DMX DMX dims to 0.1% (XLR Sockets)	DMX(RJ45) DMX dims to 0.1% (RJ45 Sockets)
	BEAM ANGLE	40 40°	60 60°	WD¹ Wide
	FINISH	BLK Black	WHT White	
	RIM FINISH	STD Standard Trim	GLR Glow Ring	MLT Mid-Lit Trim
	MOUNTING	SUM Surface Mount AD10 Adjustable Cable 10ft SAD10 Sloped Adjustable Cable 10ft	ST2 Stem 2ft WLM² Wall Mount	ST4 Stem 4ft YKM Yoke Mount
	ACCESSORIES	NO No Accessories CT⁴ Conduit Mount	DF³ Diffuser FCS⁵ Field Cut Stem Adapter Kit	EMP Remote Emergency Pack

¹ Please factor in change in lumen output of -12% with WD

² Wall Mount DMX wiring is through 3 DMX Positive / Negative / Common wires

³ Please factor in change in lumen output with diffuser (-20% with WD; -12% with other degrees)

⁴ CT only compatible with ST and AD mounting types

TECHNICAL DETAILS

Electrical

- 1,600 lm (15W)
- 2,200 lm (25W)
- 2,550 lm (35W)
- 3,000 lm (45W)
- Power Input: Universal (120-277V)
- Operating Temperature: -40°F~104°F
- Surge Protection: Built-in is 4KV
- Power Factor Greater than 0.9

LED Features

- ColorFlip™ Warm Dim 1900K ~° 3000K
- CRI 85+
- Long lasting LED luminaire tested under TM21 lumen maintenance L70 @ 100,000 Hrs
- Lumen Maintenance > 0.90 at 60,000 hours

Optics

- Precision molded high transmittance clear PC lens
- Beam Angle: 40°, 60°, Wide

Advanced Dimming

- Proprietary VX Driver™ is incorporated to all dimming options for video flicker-free lighting
- Superior 0-10V: Dims to 1%
- DMX: High resolution dims to 0.1% (Supports ANSI E1.20 RDM protocol)

Housing

- Diameter: Ø4.8"
- Height: 12.6"
- Material: High Pressure Die-Cast Aluminum, PC Lens
- Weight: 8 lbs

Mounting

- Stem 2ft or 4ft; 45° Swivel Canopy Included
- Adjustable Cable 10ft
- Surface Mount
- Wall Mount
- Yoke Mount
- Sloped Cable 10ft

Warranty

- 5-year limited warranty

Listing

- ETL Damp Location Listed
- CE
- FCC
- Energy Star Rated
- UKCA

PERFORMANCE SUMMARY*

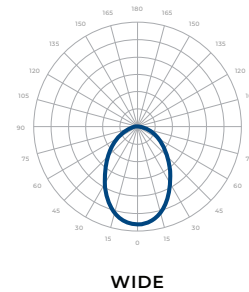
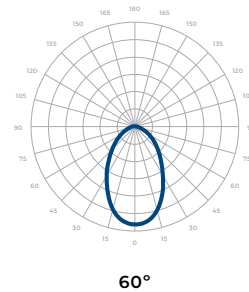
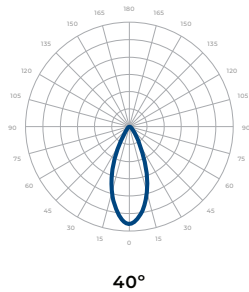
Warm Dim	1900K					3000K
DMX CCT Signal (%)	7%	20%	40%	60%	80%	100%
0-10V CCT Voltage	0.7	2	4	6	8	10
15W	30lm	145lm	430lm	816lm	1,230lm	1,600lm
25W	45lm	200lm	595lm	1,125lm	1,695lm	2,200lm
35W	50lm	230lm	690lm	1,300lm	1,965lm	2,550lm
45W	60lm	270lm	810lm	1,530lm	2,310lm	3,000lm

*Tolerance±8%

Current Consumption		
WATTAGE / VOLT	120V	277V
15W	0.17A	0.08A
25W	0.23A	0.11A
35W	0.34A	0.15A
45W	0.45A	0.2A

PHOTOMETRICS

Below is a typical photometric representation of the Atria 4 fixture. Please download IES files to ensure exact photometric value.

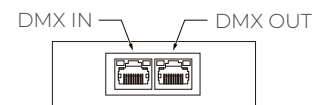


DMX REQUIREMENTS

The Atria 4 fixture with DMX is a **single channel dmx** unit that dims both intensity and color temperature between 1900K <-> 3000K. When placing an order, please indicate DMX address. (The DMX address will be listed on the back of the fixture). Do not connect more than 32 fixtures per DMX daisy chain.

The fixture can be connected with RJ45 or XLR sockets. DMX cables **are not** included; please refer to compatible DMX cabling list for more information. The final fixture on each daisy chain should be terminated by the use of a DMX terminator purchased from a 3rd party or from Meteor.

CONNECTION	RJ45 (CAT5e)	5-PIN XLR
Common	WHITE/BROWN(PIN7) & BROWN (PIN 8)	PIN 1
Signal -	ORANGE (PIN 2)	PIN 2
Signal +	WHITE/ORANGE (PIN 1)	PIN 3
Spare	-	PIN 4
Spare	-	PIN 5



RJ45 Sockets



XLR Sockets

COMPATIBLE DMX CABLING LIST

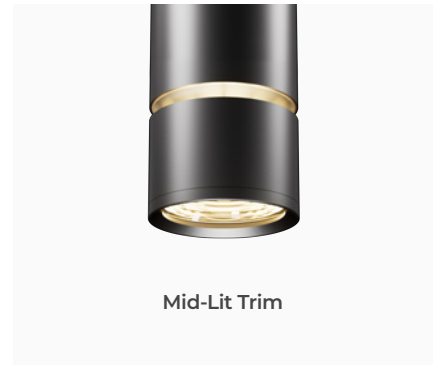
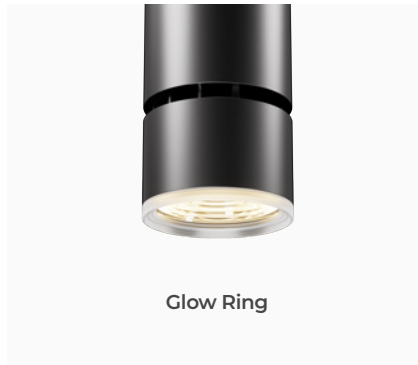
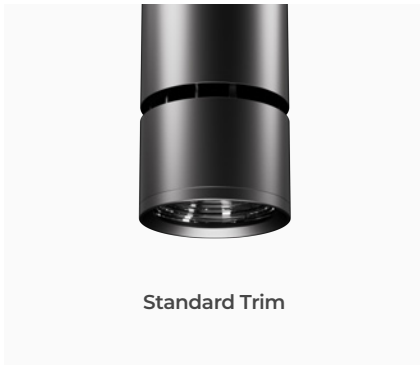
DMX uses a cable consisting of two twisted pairs plus a shield to carry data. The cable must be specifically impedance matched for the digital DMX signal, meaning that microphone cable or other non-rated cable **must not be used to carry DMX**. Network cable (Cat5, 5e or 6 cable) may be used to carry DMX in an installation; however special consideration must be given to shielding and termination. Under no circumstances should solid core cable like Cat5 be terminated into a screw down connector.

Meteor recommends the use of Belden 9729 or Belden 9841 for DMX installation. Belden 9729/9841 is a two pair cable, which allows for a spare pair for 'out and back' type terminations if needed.

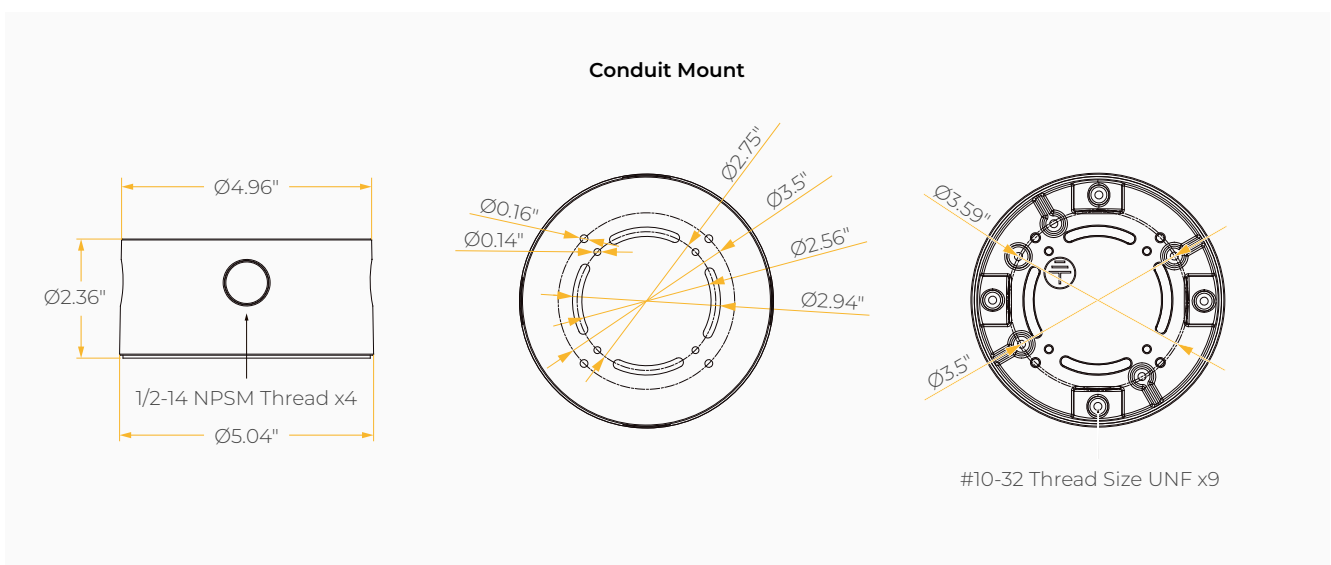
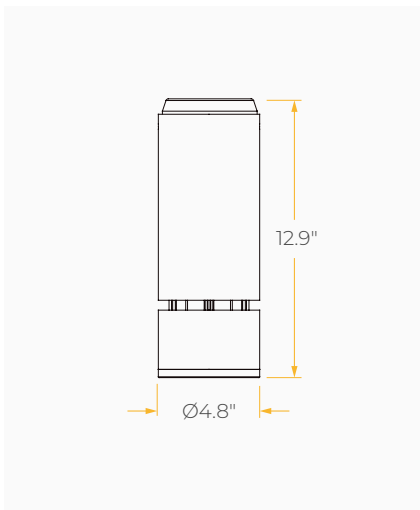
SPECIFICATION SHEET / WARM DIM
ATRIA 4 QUIET CYLINDER
 WITH PRISMATIC LENS



RIM FINISH



DIMENSIONS



MOUNTING OPTIONS*

*Junction box not included

