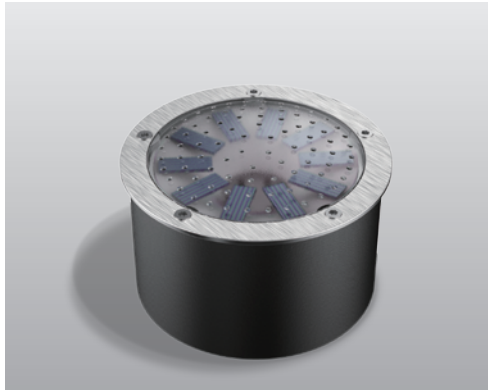


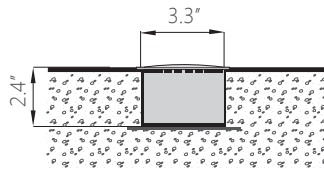
ADVANCED HIGH CEILING

SH-270 - Solar LED Ground Light

Water Proof / No Wiring

METEOR

METEOR Solar LED Paver lights incorporate state-of-the-art technology, combining the best solar panels, power storage and optical design to create products that will function for years to come.



Quantity

Project

Note

Type

General

Weight: 1.21 lbs
Rim Finish: Brushed/Polished stainless steel; Optional: SUS316 stainless steel / Brass
Lens: GE super light permeable PC
Housing: SUS304 stainless steel, cast aluminum
Power Storage: Ultracapacitor

Operational

Operation Time: Minimum 12 hours(fully charged) 4-8 hours(overcast)
Full Charge Time: 6 hours(direct sunlight)
Switch: Light sensitive auto on/off

Environmental

Compressive Strength: 2818 lbs/1281 kgs(maximum)
Operating Temperature: -4° F to 140° F
Storage Temperature: -13° F to 176° F

Warranty

3 year limited warranty. See www.meteor-lighting.com for details.

IP68
OUTDOOR RATED**How To Specify****Ordering Example: SH270C-AMB-BS-HS**

Model	CCT	Finish	Housing
<div>SH270C (Product)</div> <div>SH270B (Battery sample)</div>	<div>AMB (Amber)</div> <div>BLU (Blue)</div> <div>GEN (Green)</div> <div>RED (Red)</div> <div>WHT (White/5500-6000K)</div> <div>WAM (Warm White/2800-3000K)</div>	<div>BS (Brushed Stainless Steel)</div> <div>PS (Polished Stainless Steel)</div> <div>SS (SUS316 Stainless Steel)</div> <div>BR (Brass)</div>	<div>HS (Housing and Anchor Plate Included)</div>

*Color	LUX(Average)
White	90
Amber	40
Red	100
Blue	95
Green	60
Warm White	160