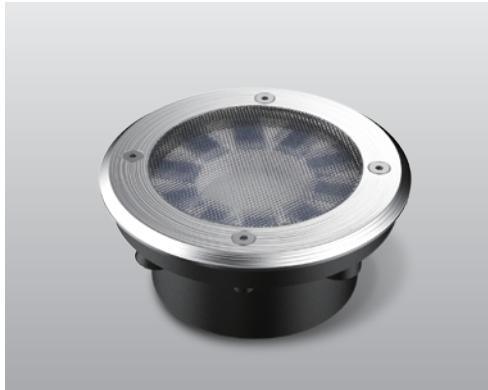


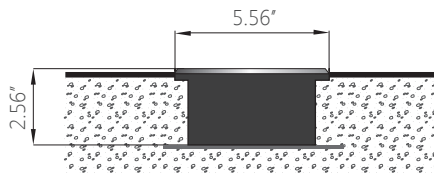
## ADVANCED HIGH CEILING

**SH-220 - Solar LED Ground Light**

Water Proof / No Wiring

**METEOR**

METEOR Solar LED Paver lights incorporate state-of-the-art technology, combining the best solar panels, power storage and optical design to create products that will function for years to come.



Quantity

Project

Note

Type

**General**

Weight: 2.09 lbs  
 Rim Finish: Brushed/Polished stainless steel  
 Lens: Anti-skid reinforced glass  
 Housing: SUS304 stainless steel, cast aluminum  
 Power Storage: Ultracapacitor

**Operational**

Operation Time: Minimum 12 hours(fully charged) 4-8 hours(overcast)  
 Full Charge Time: 6 hours(direct sunlight)  
 Switch: Light sensitive auto on/off

**Environmental**

Compressive Strength: 2818 lbs/1281 kgs(maximum)  
 Operating Temperature: -4° F to 140° F  
 Storage Temperature: -13° F to 176° F

**Warranty**

3 year limited warranty. See [www.meteor-lighting.com](http://www.meteor-lighting.com) for details.

**How To Specify****Ordering Example: SH220C-AMB-BS-HS**

Model	CCT	Finish	Housing
<div>SH220C (Product)</div> <div>SH220B (Battery sample)</div>	<div>AMB (Amber)</div> <div>BLU (Blue)</div> <div>GEN (Green)</div> <div>RED (Red)</div> <div>WHT (White/5500-6000K)</div> <div>WAM (Warm White/2800-3000K)</div>	<div>BS (Brushed Stainless Steel)</div> <div>PS (Polished Stainless Steel)</div>	<div>HS (Housing and Anchor Plate Included)</div>

*Color	LUX(Average)
White	100
Amber	120
Red	120
Blue	35
Green	200
Warm White	110