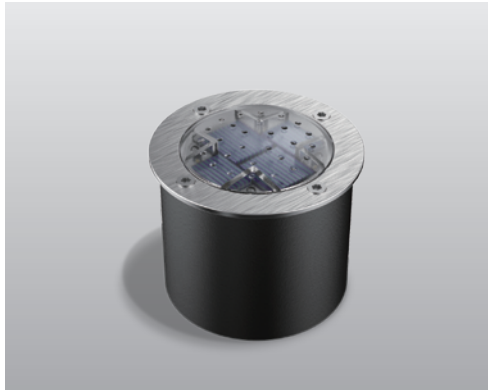


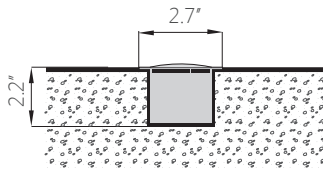
## ADVANCED HIGH CEILING

**SH-200 - Solar LED Ground Light**

Water Proof / No Wiring

**METEOR**

METEOR Solar LED Paver lights incorporate state-of-the-art technology, combining the best solar panels, power storage and optical design to create products that will function for years to come.



Quantity

Project

Note

Type

**General**

**Weight:** 0.55 lbs  
**Rim Finish:** Brushed/Polished stainless steel; Optional: SUS316 stainless steel / Brass  
**Lens:** GE super light permeable PC  
**Housing:** SUS304 stainless steel, cast aluminum  
**Power Storage:** Ultracapacitor

**Operational**

**Operation Time:** Minimum 12 hours(fully charged) 4-8 hours(overcast)  
**Full Charge Time:** 6 hours(direct sunlight)  
**Switch:** Light sensitive auto on/off

**Environmental**

**Compressive Strength:** 2541 lbs/1153 kgs(maximum)  
**Operating Temperature:** -4° F to 140° F  
**Storage Temperature:** -13° F to 176° F

**Warranty**

3 year limited warranty. See [www.meteor-lighting.com](http://www.meteor-lighting.com) for details.

IP68  
OUTDOOR RATED**How To Specify****Ordering Example: SH200C-AMB-BS**

Model	CCT	Finish	Housing
<div>SH200C (Product)</div> <div>SH200B (Battery sample)</div>	<div>AMB (Amber)</div> <div>BLU (Blue)</div> <div>GEN (Green)</div> <div>RED (Red)</div> <div>WHT (White/5500-6000K)</div> <div>WAM (Warm White/2800-3000K)</div>	<div>BS (Brushed Stainless Steel)</div> <div>PS (Polished Stainless Steel)</div> <div>SS (SUS316 Stainless Steel)</div> <div>BR (Brass)</div>	<div>HS* (Housing)</div>

\*Without Anchor Plate Included

*Color	LUX(Average)
White	25
Amber	25
Red	50
Blue	20
Green	55
Warm White	25