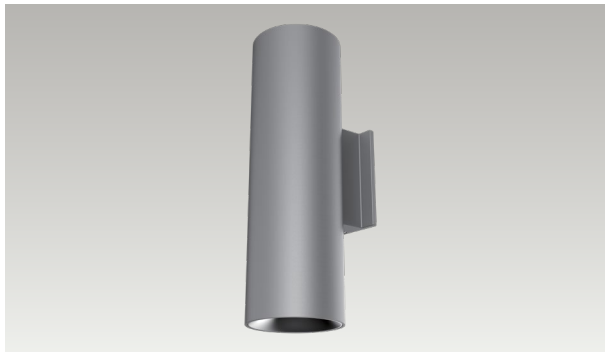


ADVANCED HIGH CEILING

Lance 6 – Single Sided



High Performing Outdoor Luminaire

Built to last, the Lance 6 is a 6-inch round outdoor wall mount cylinder with a lumen package range from 2,661 lm to 5,009 lm. This IP 65 rated, single sided luminaire is available in a variety of configurations, and optics to help make a bold architectural statement.

Quantity	Type
Project	Note

Electrical System

- 6010 lm (30W)
- 8014 lm (50W)
- Power Input: Universal (120-277V)
- Operating Temperature: 14°F~104°F
- Surge Protection: 2.5KV

LED Technology

- 2700K, 3000K, 3500K, 4000K
- 85 CRI, 93 CRI
- Beam Angle: 40°, 60°, WD
- Rated Life > 60,000 Hours (L70)

Advanced Dimming

(Proprietary VX Driver is incorporated to all dimming options for video flicker-free lighting)

- Standard 0-10V: dims to 10%
- Superior 0-10V: dims to 1%
- DMX: high resolution dims to 0.1%
- Supports ANSI E1.20 RDM protocol

Housing

- Diameter: 6.37" (162mm)
- Height: 15" (381mm)
- Material: Aluminum
- Weight: 13 lbs

Warranty

- 5 year limited warranty

Listing

- ETL Wet Location Listed
- IP65



Lance 6 – Single Sided




How To Specify:

Ordering Example: LA6-D-50-408-UNV-SPV-40-BLK-STD-HC

4-5 weeks lead time on over 75% of specifications.

Model	Direction	Wattage	CCT / CRI	Voltage	Dimming
LA6				UNV	
LA6 Lance6	D Down	30 30W 50 50W	278 2700K / CRI85 308 3000K / CRI85 358 3500K / CRI85 408 4000K / CRI85 279 2700K / CRI93 309 3000K / CRI93 359 3500K / CRI93	UNV 120-277V	NOD Non-Dimming STV Standard 0-10V dims to 10% SPV Superior 0-10V dims to 1% DMX DMX dims to 0.1%

Beam Angle	Color	Finish	Accessories
40 40 60 60 WD¹ WIDE	BLK Black WHT White GRY Gray BRZ Bronze	STD Standard NAT Natatorium Rated MAR Marine Finish	FW¹ Forward Throw WW¹ Wall Wash 20° LL¹ Linear Lens HC² Honeycomb Louver
¹ Please factor in change in lumen output of -12%			¹ Please factor in change in lumen output of -20% ² Please factor in change in lumen output of -30%.

Lance 6 – Single Sided



Delivered Lumens*

Wattage \ CCT	30W	50W
4000K	3005 lm	5009 lm
3500K	2960 lm	4933 lm
3000K	2890 lm	4810 lm
2700K	2661 lm	4435 lm

Current Consumption

Wattage \ Volt	120V	277V
30W	0.275A	0.12A
50W	0.46A	0.20A

*Tolerance±8%

DMX Requirements*

Each Lance 6 DMX unit has ONE CHANNEL per fixture. Fixture will be controlled by DMX number controlling intensity. We do not recommend more than 32 fixtures per DMX daisy chain. When placing order, please indicate DMX address (refer to DMX Address example below). DMX address will be listed on the back of each fixture.

Fixture	DMX Address
	Downlight (ex. X+1)
#1	1
#2	2
#3	3

- The LED fixture will have 2 DMX positive / Negative wires for connection.
- The final fixture should be terminated by the use of DMX Terminator (by others).

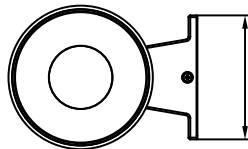
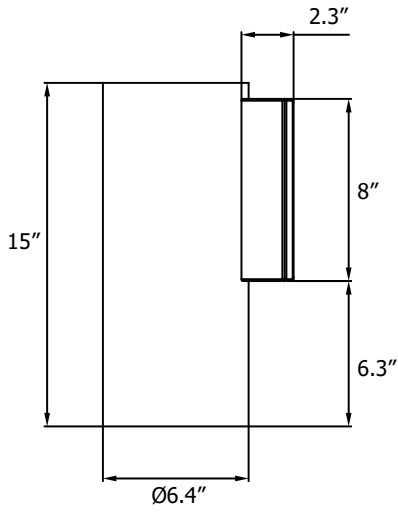
Compatible DMX Cabling List

DMX uses a cable consisting of two twisted pairs plus a shield to carry data. The cable must be specifically impedance matched for the digital DMX signal, meaning that microphone cable or other non-rated cable **must not be used to carry DMX**. Network cable (Cat5, 5e or 6 cable) may be used to carry DMX in an installation; however special consideration must be given to shielding and termination. Under no circumstances should solid core cable like Cat5 be terminated into a screw down connector.

Meteor recommends the use of Belden 9729 for DMX installation. Belden 9729 is a two pair cable, which allows for a spare pair for 'out and back' type terminations if needed. Below is a list of other compatible Belden cables.

Lance 6 – Single Sided

Dimensions



5.5"