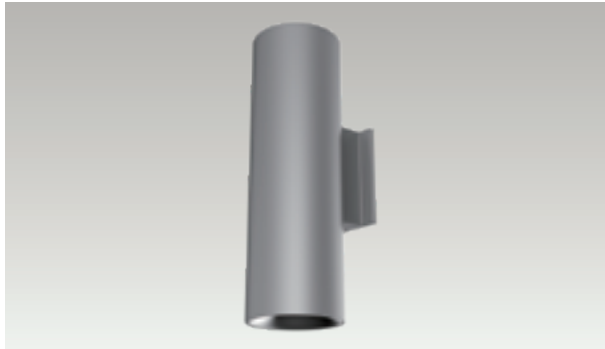


ADVANCED HIGH CEILING

Lance 6 - W+RGB-Up-and-Down



High Performing Outdoor Luminaire

Built to last, the Lance 6 is a 6-inch round outdoor wall mount cylinder with a combined lumen package range from 3,430 lm to 10,018 lm. Available in a variety of configurations, this IP 65 rated luminaire has W+RGB color tuning technology to make a bold architectural statement.

Quantity	Type
Project	Note

Electrical System

- 3430 lm (60W) Uplight: 30W / Downlight: 30W
- Power Input: Universal (120-277V)
- Operating Temperature: -4°F~113°F
- Surge Protection: 2.5KV

Housing

- Diameter: 6.37" (162mm)
- Height: 20" (508.5mm)
- Material: Aluminum
- Weight: 15.2 lbs

LED Technology

- Wavelength: R 645 nm, G 520 nm, B 445 nm
- 3000K White
- 85 CRI, 93 CRI
- Beam Angle:
 - Down: 40°, 60°, WD
 - Up: 40°, 60°, WD
- Rated Life > 60,000 Hours (L70)

Warranty

- 5 year limited warranty

Listing

- ETL Wet Location Listed
- IP65

Advanced Dimming

(Proprietary VX Driver is incorporated to all dimming options for video flicker-free lighting)

- DMX: high resolution dims to 0.1%
(Supports ANSI E1.20 RDM protocol)



Lance 6 - W+RGB-Up-and-Down



How To Specify:

Ordering Example: LA6-60-308C-UNV-DMX-4040-BLK

4-5 weeks lead time on over 75% of specifications.

Model	Wattage	CCT / CRI	Voltage	Dimming
<input type="text" value="LA6"/>	<input type="text"/>	<input type="text"/>	<input type="text" value="UNV"/>	<input type="text" value="DMX"/>
LA6 Lance 6	60 Downlight: 30W Uplight: 30W	308C 3000K / CRI85 +RGB NA Architectural Gold	UNV 120-277V	DMX DMX dims to 0.1%
NOTE: Contact Factory for only downlight option				

Beam Angle

Downlight:		Uplight:	
40	40°	40	40°
60	60°	60	60°
WD ¹	WIDE	WD ¹	WIDE

¹ Please factor in change in lumen output of -12%

Color

BLK	Black
WHT	White
GRY	Gray
BRZ	Bronze



Finish

STD	Standard
NAT	Natorium Rated
MAR	Marine Finish

Accessories

FW ¹	Forward Throw
WW ¹	Wall Wash 20°
LL ¹	Linear Lens
HC ²	Honeycomb Louver
SL ³	Solite Lens

¹ Please factor in change in lumen output of -20%

² Please factor in change in lumen output of -30%

³ Please factor in change in lumen output of -15%

Lance 6 - W+RGB-Up-and-Down



Delivered Lumens*

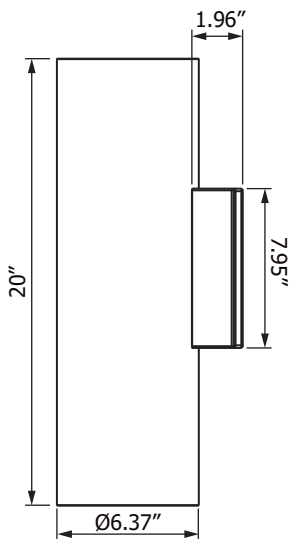
	Uplight		Downlight	
Wattage	30W		30W	
CCT	Beam Angle: 40°			
R	5 W	75 lm	5 W	75 lm
G	5 W	505 lm	5 W	505 lm
B	5 W	61 lm	5 W	61 lm
W	15 W	1074 lm	15 W	1074 lm

*Tolerance ± 8%

Current Consumption

Wattage \ Volt	120V	277V
60W	0.55A	0.24A

Dimensions



60W