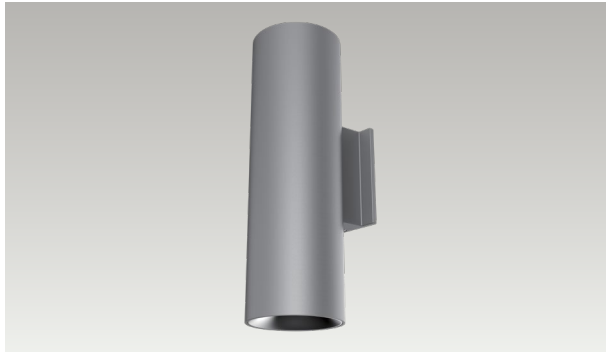


ADVANCED HIGH CEILING

Lance 6 - RGB Uplight / White Downlight



High Performing Outdoor Luminaire

Built to last, the Lance 6 is a 6-inch round outdoor wall mount cylinder with a combined lumen package range from 3,430 lm to 10,018 lm. Available in a variety of configurations, this IP 65 rated luminaire has W+RGB color tuning technology to make a bold architectural statement.

Quantity	Type
Projec	Note

Electrical System

- 4287 lm (60W) Uplight: 30W / Downlight: 30W
- Power Input: Universal (120-277V)
- Operating Temperature: 14°F~104°F
- Surge Protection: 2.5KV

LED Technology

- Downlight: 2700K, 3000K, 3500K, 4000K, NA (Sodium)
- Uplight: Wavelength R 645 nm, G 520 nm, B 445 nm
- 85 CRI, 93 CRI
- Beam Angle:
Down: 40°, 60°, WD
Up: 40°, 60°, WD
- Rated Life > 60,000 Hours (L70)

Housing

- Diameter: 1.5" (40mm)
- Height: 8.5" (216.5mm)
- Material: Aluminum
- Weight: 1.3 l

Warranty

- 5year limited warranty

Listing

- ETL Wet Location Listed
- IP65

Advanced Dimming

(Proprietary VX Driver is incorporated to all dimming options for video flicker-free lighting)

- DMX: high resolution dims to 0.1% (Supports ANSI E1.20 RDM protocol)



Lance 6 - RGB Uplight / White Downlight




How to Specify:

Ordering Example: LA6-60-408RGB-UNV-SPV-4040-BLK

4-5 weeks lead time on over 75% of specifications.

Model	Wattage	CCT / CRI	Voltage
LA6			UNV
LA6 Lance 6	60 Downlight: 30W Uplight: 30W	Downlight 278 2700K / CRI85 308 3000K / CRI85 358 3500K / CRI85 408 4000K / CRI85 279 2700K / CRI93 309 3000K / CRI93 359 3500K / CRI93 409 4000K / CRI93 Uplight RGB RGB	UNV 120-277V
	NOTE: Contact Factory for only downlight option		

Dimming	Beam Angle	Color	Finish	Accessories
DMX				
DMX DMX dims to 0.1%	Downlight 40 40° 60 60° WIDE ¹ WIDE Uplight 40 40° 60 60° WIDE ¹ WIDE ¹ Please factor in change in lumen output of -12%	BLK Black WHT White GRY Gray BRZ Bronze  BLK WHT GRY BRZ	STD Standard NAT Natatorium Rated MAR Marine Finish	FW ¹ Forward Throw WW ¹ Wall Wash 20° LL ¹ Linear Lens HC ² Honeycomb Louver ¹ Please factor in change in lumen output of -20% ² Please factor in change in lumen output of -30%. Honeycomb Louver applicable only to downlight.

Lance 6 - RGB Uplight / White Downlight



Delivered Lumens*

Uplight	Color	R		G		B			
	Wattage	150 lm		1010 lm		122 lm			
Downlight	CCT	2700K		3000K		3500K		4000K	
	Wattage	2661 lm		2890 lm		2960 lm		3005 lm	

Current Consumption

Volt	120V	277V
Wattage	0.55A	0.24A
60W		

*Tolerance ± 8%

DMX Requirements*

The Lance 6 RGB Uplight fixture with DMX is a **FOUR CHANNEL DMX unit**.
When placing order, please indicate DMX address.

Fixture	DMX Address			
	Uplight			Downlight
	Red Control (ex. X)	Green Control (ex. X+1)	Blue Control (ex. X+2)	White Control (ex. X+3)
#1	1	2	3	4
#2	5	6	7	8
#3	9	10	11	12

- When placing order, please indicate DMX address. (The DMX address will be listed on the back of the fixture.)
- The LED fixture will have 2 DMX positive / Negative wires for connection.
- The final fixture should be terminated by the use of DMX Terminator (by others).

Compatible DMX Cabling List

DMX uses a cable consisting of two twisted pairs plus a shield to carry data. The cable must be specifically impedance matched for the digital DMX signal, meaning that microphone cable or other non-rated cable **must not be used to carry DMX**. Network cable (Cat5, 5e or 6 cable) may be used to carry DMX in an installation; however special consideration must be given to shielding and termination. Under no circumstances should solid core cable like Cat5 be terminated into a screw down connector.

Meteor recommends the use of Belden 9729 for DMX installation. Belden 9729 is a two pair cable, which allows for a spare pair for 'out and back' type terminations if needed. Below is a list of other compatible Belden cables.

Dimensions

