

# NOVALINK

SPECIFICATION SHEET  
NOVALINK SYSTEM - STATIC WHITE

## INTEGRATED LIGHTING INFRASTRUCTURE WITH BUILT-IN ILLUMINATION

### Housing

Dimensions :

NovaLink 2ft : 24.9" x 5.5" x 3.8"

NovaLink 4ft : 48.2" x 5.5" x 3.8"

Corner : 11.1" x 5.48" x 3.78"

Weight :

NovaLink 2ft : 10.8 lbs

NovaLink 4ft : 21.6 lbs

Corner : 5.5 lbs

### Material

Housing : High Pressure Die-Cast Aluminum, Tempered Glass

Mounting : Corrosion-resistant fluorocarbon-coated steel

### Power Input

120W, 240W | 120-277V

### Lumen Output

Uplight : 33,611 lm (240W)

Downlight Blades : 22,519 lm (240W)

### Dimming

Standard 0-10V : Dims to 10%

### Color Quality

CRI 85

### Rated Life

> 100,000 Hours (L70)

### Finish



Black



White

### Color Temperature



3000K



3500K



4000K



5000K

### Distribution



Direct  
Uplight



Indirect  
Downlight



Hybrid

### Mounting



Adjustable  
Cable Mount



Stem Mount

### Warranty

5 Year limited warranty

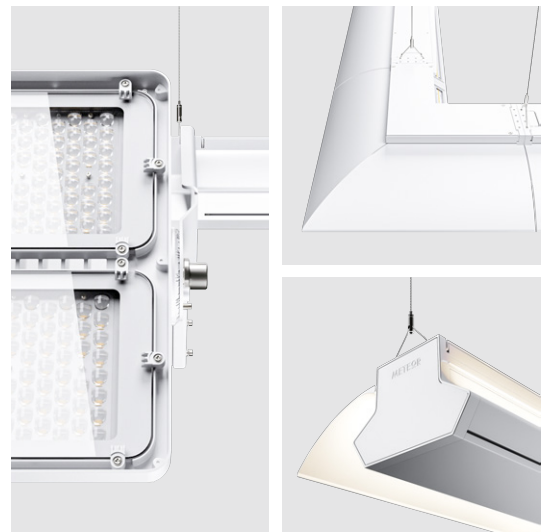
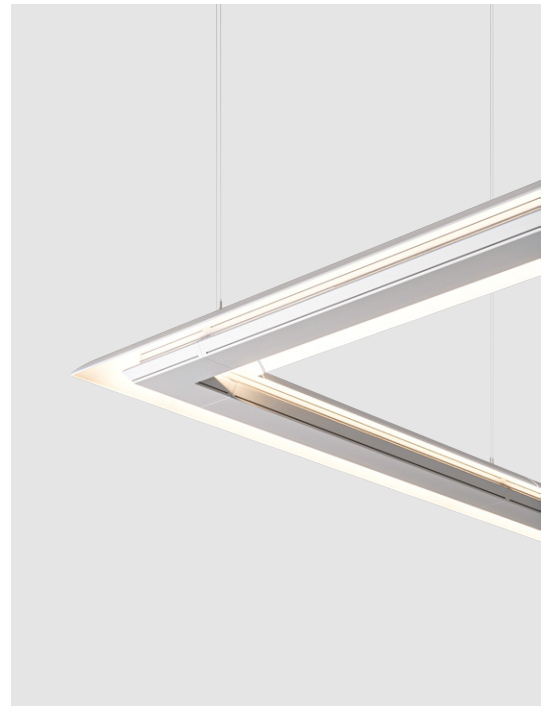
### Listing



## Light + Structure. One System.

NovaLink System is a modular suspended lighting infrastructure that integrates performance and simplicity into one clean solution. Offered in 2 ft and 4 ft segments, its sleek linear rails feature concealed wiring for a streamlined appearance and quick installation.

The system supports a variety of configurations, including non-illuminated or integrated LED channels for upward or downward ambient lighting. When paired with the Bolt Nova fixture, the NovaLink System delivers powerful asymmetric indirect lighting, ideal for large-scale spaces like natatoriums or arenas. The integrated linear lighting provides flexible fill illumination for spectator areas, circulation zones and general lighting all within a unified framework.



# METEOR

[meteor-lighting.com](http://meteor-lighting.com)

**SPECIFICATION**

PROJECT NAME

DATE

**NOVALINK**

<input type="text"/>	MODEL	<b>NL2</b> NovaLink 2ft	<b>NL4</b> NovaLink 4ft
<input type="text"/>	WATTAGE	<b>D120<sup>1</sup></b> NovaLink 2ft 60W per side <b>D240<sup>2</sup></b> NovaLink 4ft 120W per side	<b>S100<sup>1</sup></b> NovaLink 2ft 100W single side <b>S200<sup>2</sup></b> NovaLink 4ft 200W single side
<input type="text"/>	CCT / CRI	<b>308</b> 3000K / CRI 85 <b>508</b> 5000K / CRI 85	<b>358</b> 3500K / CRI 85 <b>408</b> 4000K / CRI 85
<input type="text"/>	VOLTAGE	<b>UNV</b> 120-277V	
<input type="text"/>	DIMMING	<b>STV</b> Standard 0-10V dims to 10%	
<input type="text"/>	FINISH	<b>BLK</b> Black	<b>WHT</b> White
<input type="text"/>	MOUNTING <sup>3</sup>	<b>AD10</b> Adjustable Cable 10ft	<b>ST2</b> Stem 2ft <b>ST4</b> Stem 4ft
<input type="text"/>	RATING	<b>OUT<sup>4</sup></b> Outdoor Rating	<b>NAT<sup>5</sup></b> Natatorium Rating

<sup>1</sup> Option is not compatible with NL4

<sup>2</sup> Option is not compatible with NL2

<sup>3</sup> Stem mounts are required at both ends of NLC and all NL2/NL4 joining points. Maximum suspension spacing must not exceed 8 feet

<sup>4</sup> Outdoor Rating: Coating and wiring will be changed to high UV resistant and corrosion resistant materials for long term operation in outdoor environments

<sup>5</sup> Natatorium rating: Coating and sealant will be changed to high corrosion resistant materials to prevent damage from long term exposure to chlorine vapors

**NOVALINK CORNER**

<input type="text"/>	MODEL	<b>NLC</b> NovaLink Corner
<input type="text"/>	WATTAGE	<b>D70</b> 23W Inner 47W Outer <b>S130</b> 30W Single Inner Side <b>SO60</b> 60W Single Outer Side
<input type="text"/>	CCT / CRI	<b>308</b> 3000K / CRI 85 <b>508</b> 5000K / CRI 85 <b>358</b> 3500K / CRI 85 <b>408</b> 4000K / CRI 85
<input type="text"/>	VOLTAGE	<b>UNV</b> 120-277V
<input type="text"/>	DIMMING	<b>STV</b> Standard 0-10V dims to 10%
<input type="text"/>	FINISH	<b>BLK</b> Black <b>WHT</b> White
<input type="text"/>	RATING	<b>OUT<sup>1</sup></b> Outdoor Rating <b>NAT<sup>2</sup></b> Natatorium Rating

<sup>1</sup> Outdoor Rating: Coating and wiring will be changed to high UV resistant and corrosion resistant materials for long term operation in outdoor environments

<sup>2</sup> Natatorium rating: Coating and sealant will be changed to high corrosion resistant materials to prevent damage from long term exposure to chlorine vapors

**SPECIFICATION**

PROJECT NAME

DATE

**NOVALINK DOWNLIGHT BLADE**

<b>NLB</b>	MODEL	<b>NLB</b> NovaLink Downlight Blade		
	LENGTH	<b>2</b> 2 ft	<b>4</b> 4 ft	<b>CI</b> Corner Inner Side
		<b>CO</b> Corner Outer Side		
<b>WHT</b>	FINISH	<b>WHT</b> White		

<sup>1</sup> Outdoor Rating: Coating and wiring will be changed to high UV resistant and corrosion resistant materials for long term operation in outdoor environments  
<sup>2</sup> Natatorium rating: Coating and sealant will be changed to high corrosion resistant materials to prevent damage from long term exposure to chlorine vapors

**NOVALINK NON-ILLUMINATED**

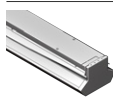
	MODEL	<b>NL2</b> NovaLink 2ft	<b>NL4</b> NovaLink 4ft	<b>NLC<sup>1</sup></b> NovaLink Corner
<b>NO</b>	WATTAGE	<b>NO</b> Non-Illuminated		
	FINISH	<b>BLK</b> Black	<b>WHT</b> White	
	MOUNTING <sup>2</sup>	<b>AD10</b> Adjustable Cable 10ft	<b>ST2</b> Stem 2ft	<b>ST4</b> Stem 4ft

<sup>1</sup> NLC option does not require mounting  
<sup>2</sup> Stem mounts are required at both ends of NLC and all NL2/NL4 joining points. Maximum suspension spacing must not exceed 8 feet

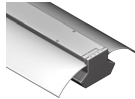
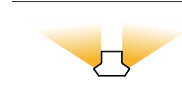
**PART REFERENCE**



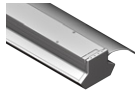
**NL2-NO**  
24.87" x 5.48" x 3.78"



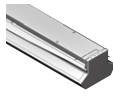
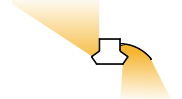
**NL2-D120**  
Dual Uplight : 2x 60W (16,805 lm\*)



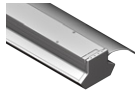
**NL2-D120 with 2x NLB-2**  
Dual Downlight : 2x 60W (11,260 lm\*)



**NL2-D120 with 1x NLB-2**  
Uplight : 60W (8,400 lm)  
Downlight : 60W (5,630 lm)



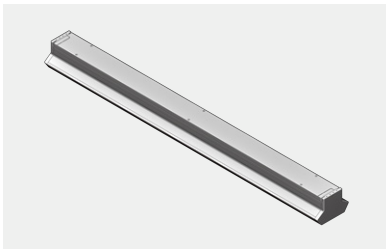
**NL2-S100**  
Single Uplight : 100W (12,625 lm)



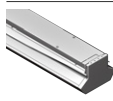
**NL2-S100 with 1x NLB-2**  
Single Downlight : 100W (8,300 lm)



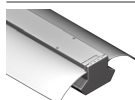
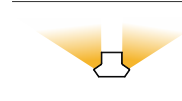
\*Total lumens from both sides



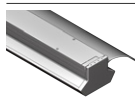
**NL4-NO**  
48.1" x 5.48" x 3.78"



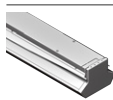
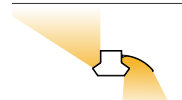
**NL4-D240**  
Dual Uplight : 2x 120W (33,610 lm\*)



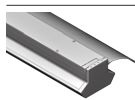
**NL4-D240 with 2x NLB-4**  
Dual Downlight : 2x 120W (22,520 lm\*)



**NL4-D240 with 1x NLB-4**  
Uplight : 120W (16,805 lm)  
Downlight : 120W (11,260 lm)



**NL4-S200**  
Single Uplight : 200W (25,250 lm)

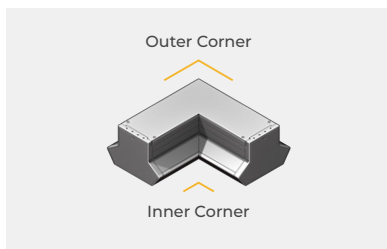


**NL4-S200 with 1x NLB-4**  
Single Downlight : 200W (16,600 lm)



\*Total lumens from both sides

**PART REFERENCE**



**NLC-NO**  
10.31" x 10.31" x 3.78"

	<b>NLC-D70</b> Outer Corner : 47W (6,445 lm) Inner Corner : 23W (3,150 lm)	
	<b>NLC-D70 with NLB-CI, NLB-CO</b> Outer Corner : 47W (4,255 lm) Inner Corner : 23W (2,080 lm)	
	<b>NLC-D70 with NLB-CI</b> Outer Corner : 47W (6,445 lm) Inner Corner : 23W (2,080 lm)	
	<b>NLC-D70 with NLB-CO</b> Outer Corner : 47W (4,255 lm) Inner Corner : 23W (3,150 lm)	
	<b>NLC-SO60</b> Outer Corner : 60W (8,230 lm)	
	<b>NLC-SI30</b> Inner Corner : 30W (4,115lm)	
	<b>NLC-SO60 with NLB-CO</b> Outer Corner : 60W (5,430 lm)	
	<b>NLC-SI30 with NLB-CI</b> Inner Corner : 30W (2,715 lm)	

## TECHNICAL DETAILS

---

### NovaLink System

- **NovaLink is compatible with Bolt Nova** in both Static White and RGBW models, available in **700W** and **1050W** outputs. To ensure proper system integration, please specify NovaLink and Bolt Nova configurations together when placing an order. For detailed fixture data, refer to the Bolt Nova specification sheet, or contact us for expert assistance in planning and specifying your project.

### Electrical

- Power Input : Universal (120-277V)
- Operating Temperature : -40°F~112°F
- Surge Protection : Built-in is 4kV

### LED Features

- Color Temperature : 3000K, 3500K, 4000K, 5000K
- CRI 85
- Long lasting LED luminaire tested under TM21 lumen maintenance L70 @ 100,000 Hrs

### Advanced Dimming

- Proprietary VX Driver™ is integrated across all dimming options, delivering video flicker-free performance and full compliance with IEEE 1789.
- Standard 0-10V : Dims to 10%

### Housing

- Dimensions :  
NovaLink 2ft : 24.9" x 5.5" x 3.8"  
NovaLink 4ft : 48.2" x 5.5" x 3.8"  
Corner : 11.1" x 5.48" x 3.78"
- Material : High Pressure Die-Cast Aluminum, Corrosion-resistant fluorocarbon-coated steel, Tempered Glass
- Weight :  
NovaLink 2ft : 10.8 lbs  
NovaLink 4ft : 21.6 lbs  
Corner : 5.5 lbs

### Mounting

- Adjustable Cable 10ft (SUS316)
- Stem 2ft, 4ft

\*Stem mounts are required at both ends of NLC and all NL2/NL4 joining points. Maximum suspension spacing must not exceed 8 feet

### Warranty

- 5-year limited warranty

### Listing

- ETL Wet Location Listed
- CE
- FCC
- IP66

**NOVALINK PERFORMANCE SUMMARY\***

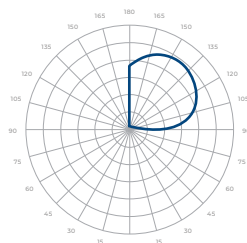
Delivered Lumens				
CCT/WATTAGE	3000K	3500K	4000K	5000K
<b>NOVALINK 2 FT</b>				
<b>D120*</b>	15,905 lm	16,240 lm	16,750 lm	16,805 lm
<b>D120*</b> DOWNLIGHT BLADE	10,655 lm	10,880 lm	11,220 lm	11,260 lm
<b>S100</b>	11,975 lm	12,200 lm	12,580 lm	12,625 lm
<b>S100</b> DOWNLIGHT BLADE	7,855 lm	8,020 lm	8,270 lm	8,300 lm
<b>NOVALINK 4 FT</b>				
<b>D240*</b>	31,805 lm	32,485 lm	33,500 lm	33,610 lm
<b>D240*</b> DOWNLIGHT BLADE	21,310 lm	21,765 lm	22,445 lm	22,520 lm
<b>S200</b>	23,890 lm	24,400 lm	25,165 lm	25,250 lm
<b>S200</b> DOWNLIGHT BLADE	15,710 lm	16,045 lm	16,545 lm	16,600 lm
<b>NOVALINK CORNER</b>				
<b>D70*</b>	9,090 lm	9,280 lm	9,570 lm	9,595 lm
<b>D70*</b> DOWNLIGHT BLADE	6,000 lm	6,125 lm	6,315 lm	6,335 lm
<b>S130</b>	3,895 lm	3,980 lm	4,100 lm	4,115 lm
<b>S130</b> DOWNLIGHT BLADE	2,570 lm	2,625 lm	2,705 lm	2,715 lm
<b>SO60</b>	7,790 lm	7,955 lm	8,205 lm	8,230 lm
<b>SO60</b> DOWNLIGHT BLADE	5,140 lm	5,250 lm	5,415 lm	5,430 lm

Current Consumption		
CCT/WATTAGE	120V	277V
<b>D120</b>	1.1A	0.48A
<b>D240</b>	2.2A	0.95A
<b>S100</b>	0.92A	0.4A
<b>S200</b>	1.83A	0.79A
<b>D70</b>	0.64A	0.28A
<b>S130</b>	0.28A	0.12A
<b>SO60</b>	0.55A	0.24A

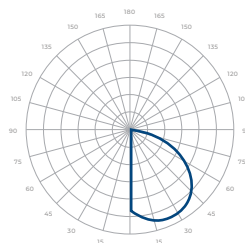
\*Tolerance±8% \*Total lumens from both sides

**PHOTOMETRICS\***

Below is a typical photometric representation of the NovaLink fixture. Please download IES files to ensure exact photometric value.



**DIRECT**

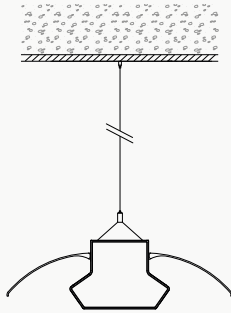


**DOWNLIGHT BLADE**

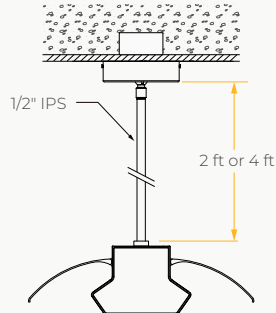
**MOUNTING OPTIONS**

---

Adjustable Cable Mount

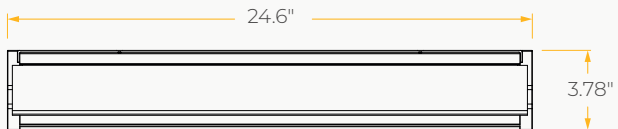
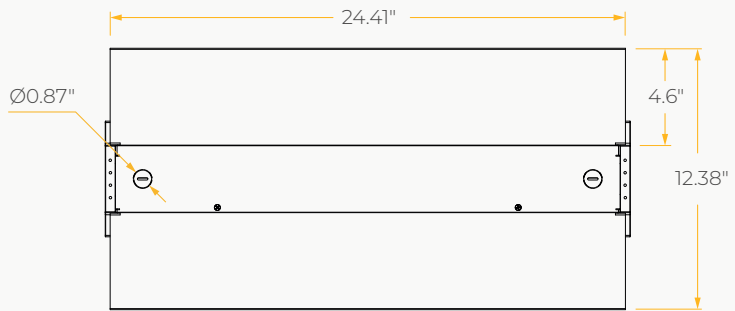
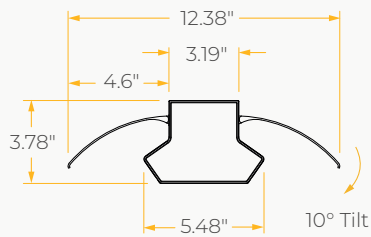
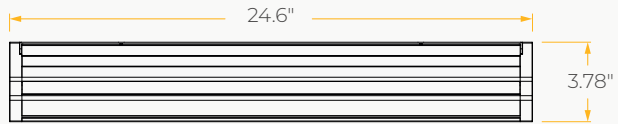
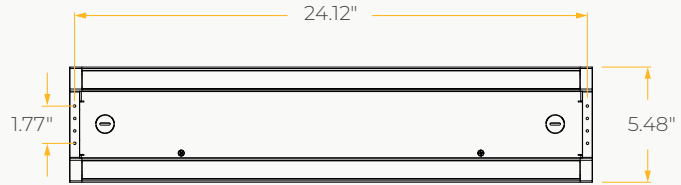
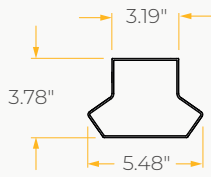


Stem Mount



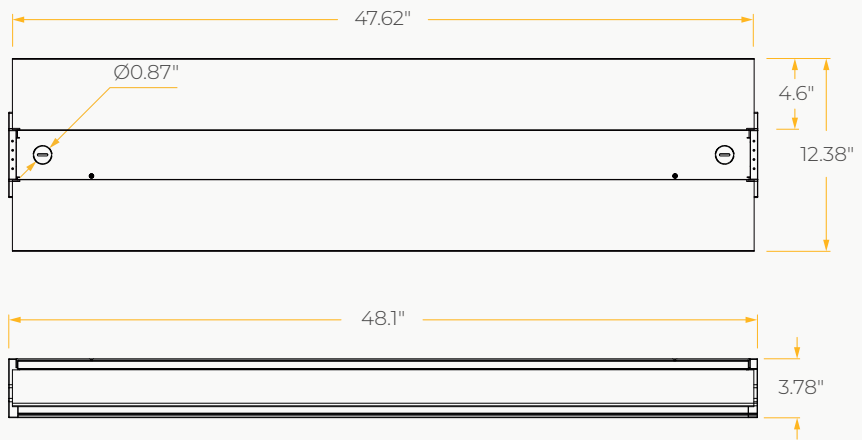
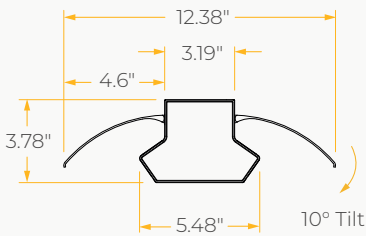
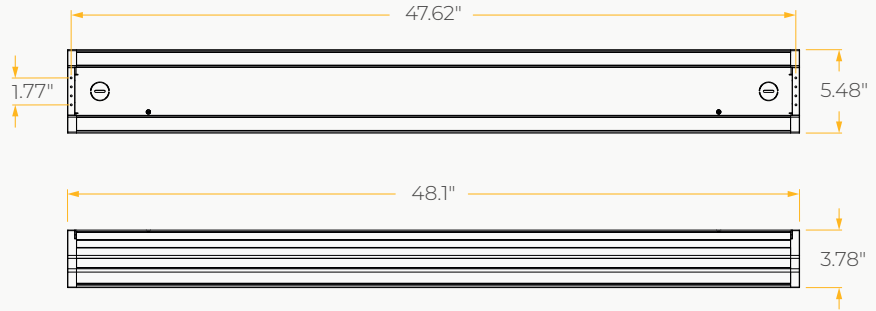
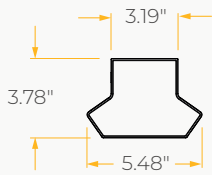
**DIMENSIONS**

NovaLink 2 ft



**DIMENSIONS**

NovaLink 4 ft



**DIMENSIONS**

**NovaLink Corner Block**

