

# REV 8 PRIME

SPECIFICATION SHEET  
ARCHI-COLOR™ W+RGB & W+HUE  
NEW CONSTRUCTION

## QUIET CEILING DESIGN HIGH LUMEN RECESSED DOWNLIGHT

### Housing

Aperture : Ø8.1" | Oversize Trim : 8.46" | Ceiling Cutout : 8.25"  
Maximum Ceiling Thickness : 1.5" | Height : 8.6" | Weight : 17.63 / 18.82 lbs

### Material

Housing : Forged Aluminum Heatsink  
Reflector : Flow Forming Aluminum

### Power Input

W+RGB:  
200W TypeA(White=100W, RGB=100W) | 120-277V  
200W TypeB(White=150W, RGB=50W) | 120-277V  
W+Hue:  
200W(White=132W, HSV=66W) | 120-277V

### Lumen Output

W+RGB: 13,250 lm (200W TypeA), 14,145 lm (200W TypeB)  
W+Hue: 16,050 lm (200W)

### Dimming

DMX : High resolution dims to 0.1%

### Color Quality

CRI 85

### Rated Life

> 60,000 Hours (L70)

### Finish



### Color Temperature



### Optics



### Warranty

5 Year limited warranty

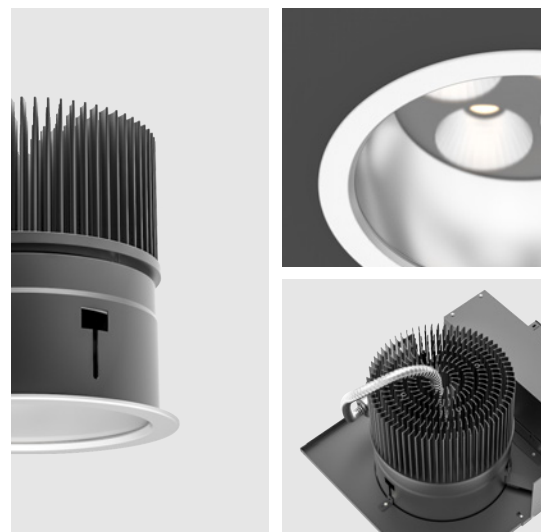
### Listing



## Precision Engineered For High Performance.

8-inch aperture high lumen recessed downlight utilizing Meteor Lighting's proprietary Archi-Color™ solution, that gives you True White light and unlimited RGB possibilities.

This product is compatible with all DMX control systems and follows ANSI E1.20 RDM protocol. You can now get white and RGB colors all from a single light source.



# METEOR

[meteor-lighting.com](http://meteor-lighting.com)

**SPECIFICATION**

<b>PROJECT NAME</b>	<input type="text"/>	<b>DATE</b>	<input type="text"/>
<b>CATALOG #</b>	<input type="text"/>	<b>QUANTITY</b>	<input type="text"/>

<input type="text" value="R8PN"/>	<b>MODEL</b>	<b>REV 8 PRIME WITH NEW CONSTRUCTION FRAME</b>		
<input type="text"/>	<b>WATTAGE</b>	<b>200<sup>1</sup></b> 200W	<b>200A<sup>2</sup></b> White=100W/RGB=100W	<b>200B<sup>2</sup></b> White=150W/RGB=50W
<input type="text"/>	<b>CCT / CRI</b>	<b>308C</b> 3000K + RGB / CRI 85 Archi-Color™ W+RGB	<b>308U</b> 3000K + RGB / CRI 85 Archi-Color™ W+Hue	
<input type="text"/>	<b>VOLTAGE</b>	<b>120</b> 120V	<b>277</b> 277V	
<input type="text"/>	<b>DIMMING</b>	<b>DMX</b> DMX dims to 0.1% (XLR Sockets)	<b>DMX(RJ45)</b> DMX dims to 0.1% (RJ45 Sockets)	<b>DMXP</b> DMX dims to 0.1% (Terminal Block)
<input type="text"/>	<b>BEAM ANGLE</b>	<b>45</b> 45°	<b>55</b> 55°	<b>WD<sup>3</sup></b> Wide (With Diffuser)
<input type="text"/>	<b>FINISH*</b>	<b>BLK</b> Black	<b>WHT</b> White	
<input type="text"/>	<b>ACCESSORIES</b>	<b>NO</b> No Accessories <b>SCA810</b> Sloped Ceiling Adapter 8°-12° <b>SCA825</b> Sloped Ceiling Adapter 23°- 27°	<b>DF<sup>4</sup></b> Diffuser <b>SCA815</b> Sloped Ceiling Adapter 13°-17° <b>2CPL</b> 2' X 2' X 1" Custom Metal Ceiling Panel	<b>SPD<sup>5</sup></b> Surge Protector <b>SCA820</b> Sloped Ceiling Adapter 18°-22°

<sup>1</sup> Option is only compatible with 308U  
<sup>2</sup> Option is only compatible with 308C  
<sup>3</sup> Please factor in change in lumen output of -20% with WD  
<sup>4</sup> Please factor in change in lumen output with diffuser (-20% with WD; -12% with other degrees).  
<sup>5</sup> Surge protector for up to 10KV. Applicable for unstable mains or facilities using high power machineries.  
\* Finish indicates trim only, with standard matte silver reflector.

**TECHNICAL DETAILS****Electrical**

- Archi-Color™ W+RGB:  
13,250 lm (200W TypeA | White = 100W, RGB = 100W)  
14,145 lm (200W TypeB | White = 150W, RGB = 50W)
- Archi-Color™ W+Hue:  
16,050 lm (200W | White = 132W, HSV = 66W)
- Power Input: 120V or 277V
- Operating Temperature: -40°F~112°F
- Surge Protection: Built-in is 4KV
- Power Factor Greater than 0.9

**LED Features**

- Color Temperature : 3000K+Archi-Color™ W+RGB / W+Hue
- CRI 85
- Long lasting LED luminaire tested under TM21 lumen maintenance L70 @ 60,000 Hrs

**Optics**

- Flow Forming Aluminum Reflector
- Beam Angle : 45°, 55°, Wide (With diffuser)

**Advanced Dimming**

- Proprietary VX Driver™ is incorporated to all dimming options for video flicker-free lighting
- DMX : High resolution dims to 0.1% (Supports ANSI E1.20 RDM protocol)

**New Construction Housing**

- Aperture : Ø8.1"
- Height : 8.6"
- Weight : 17.63 lbs/ 18.82 lbs
- Material : Forged Aluminum Heatsink
- Non-IC Rated, insulation must be kept >1ft from housing
- Oversize Trim : 8.46"
- Ceiling Cutout : 8.25"
- Maximum Ceiling Thickness : 1.5"
- Tool-less top access allows service from above and below
- Light engine, optics, and driver(s) accessible from below ceiling

\*Note: C-Channel / Mounting Channels / T-Bar Hangers are purchased from a third party

**Warranty**

- 5-year limited warranty

**Listing**

- ETL Damp Location Listed
- FCC
- CE
- UKCA

**PERFORMANCE SUMMARY\***

Lumen Performance (W+RGB)				
	R	G	B	W
<b>200W TypeA</b>	615lm	4,075lm	480lm	8,080lm
<b>200W TypeB</b>	220lm	1,700lm	210lm	12,015lm

Wattage (W+RGB)				
Channel	R	G	B	W
<b>Fixture Wattage</b>				
<b>200W TypeA</b>	33W	33W	33W	100W
<b>200W TypeB</b>	17W	17W	17W	150W

Lumen Performance (W+Hue)				
	R	G	B	W
<b>200W</b>	930lm	7,330lm	860m	8,720lm

Wattage (W+Hue)		
Channel	HSV*	W
<b>Fixture Wattage</b>		
<b>200W</b>	66W	132W

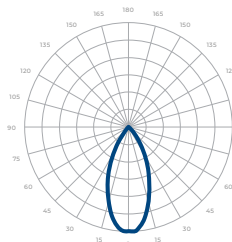
\*Beam Angle: 45° \*Tolerance ±8%

\*The output power of any color generated through the three channels of HSV.

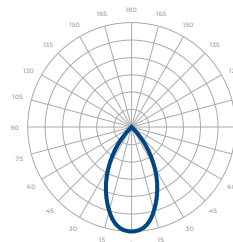
Current Consumption		
WATTAGE / VOLT	120V	227V
<b>200W</b>	1.8A	0.9A

**PHOTOMETRICS**

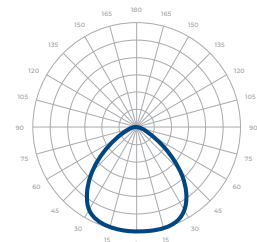
Below is a typical photometric representation of the Rev 8 Prime fixture. Please download IES files to ensure exact photometric value.



45°



55°



WIDE

## DMX REQUIREMENTS

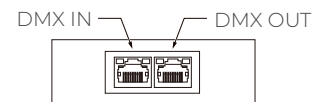
The Rev 8 Prime Archi-Color™ fixture with DMX is a **four channel dmx** unit. When placing an order, please indicate DMX address. (The DMX address will be listed on the back of the fixture). Do not connect more than 32 fixtures per DMX daisy chain.

DMX Address (W+RGB)				
Fixture	Red Control (ex. X)	Green Control (ex. X+1)	Blue Control (ex. X+2)	White Control (ex. X+3)
#1	1	2	3	4
#2	5	6	7	8
#3	9	10	11	12

DMX Address (W+Hue)				
Channel Fixture	Hue (H)	Saturation (S)	Value / Intensity (V)	White Control (W)*
#1	1	2	3	4
#2	5	6	7	8
#3	9	10	11	12

The fixture can be connected with RJ45 or XLR sockets. DMX cables **are not** included; please refer to compatible DMX cabling list for more information. The final fixture on each daisy chain should be terminated by the use of a DMX terminator purchased from a 3rd party or from Meteor.

CONNECTION	RJ45 (CAT5e)	5-PIN XLR
Common	WHITE/BROWN(PIN7) & BROWN (PIN 8)	PIN 1
Signal -	ORANGE (PIN 2)	PIN 2
Signal +	WHITE/ORANGE (PIN 1)	PIN 3
Spare	-	PIN 4
Spare	-	PIN 5



RJ45 Sockets



DMX IN DMX OUT

XLR Sockets

## COMPATIBLE DMX CABLING LIST

DMX uses a cable consisting of two twisted pairs plus a shield to carry data. The cable must be specifically impedance matched for the digital DMX signal, meaning that microphone cable or other non-rated cable **must not be used to carry DMX**. Network cable (Cat5, 5e or 6 cable) may be used to carry DMX in an installation; however special consideration must be given to shielding and termination. Under no circumstances should solid core cable like Cat5 be terminated into a screw down connector.

Meteor recommends the use of Belden 9729 or Belden 9841 for DMX installation. Belden 9729/9841 is a two pair cable, which allows for a spare pair for 'out and back' type terminations if needed.

## COLOR TEMPERATURE CHART

This color temperature chart provides the precise values required to recreate specific color temperatures.

Color Temperature Chart (W+Hue)				
Channel	1	2	3	4
COLOR/CCT	Hue (H)	Saturation (S)	Value / Intensity (V)	White Control (W)*
<b>RED</b>	0	255	255	0
<b>GREEN</b>	85	255	255	0
<b>BLUE</b>	170	255	255	0
<b>1900K</b>	16	255	255	90
<b>2700K</b>	22	255	255	200
<b>3000K</b>	28	255	255	255
<b>3500K</b>	42	225	255	255
<b>4000K</b>	70	165	255	255
<b>4500K</b>	85	150	255	255
<b>5000K</b>	120	215	255	255
<b>6500K</b>	132	255	255	237

\*The White Control channel adjusts the brightness of 3000K LEDs.

**DIMENSIONS**

