

LANCE 6

ARCHITECTURAL GRADE OUTDOOR WALL LUMINAIRE

Housing

Diameter : Ø6.4" | Height : 20" | Weight : 15.2 lbs

Material

Housing: Extruded Aluminum

Lens: Tempered Glass

Power Input

Downlight: 30W, 50W | 120-277V

Uplight: 30W, 50W | 120-277V

Lumen Output

Downlight: 3,005 lm (30W), 5,010 lm (50W)

Uplight: 3,005 lm (30W), 5,010 lm (50W)

Dimming

Standard 0-10V: Dims to 10%

Superior 0-10V: Dim to 1%

DMX: High resolution dims to 0.1%

Color Quality

CRI 85, CRI 93

Rated Life

> 100,000 Hours (L70)

Finish



Black



White



Gray



Bronze

Color Temperature



2700K



3000K



3500K



4000K

Optics



40°



60°



Wide

Warranty

5 Year limited warranty

Listing

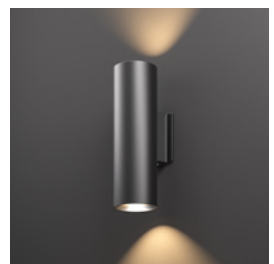


SPECIFICATION SHEET WHITE UP & DOWN

Designed for Timeless Exteriors

This 6-inch round wall mount cylinder boasts an impressive lumen range of 6,010 to 10,020 lm, providing exceptional illumination while making a bold architectural statement.

The IP65 rated Lance 6 ensures durability and reliability in all outdoor environments, making it the ideal choice for accentuating architectural features and enhancing outdoor facades.



METEOR

meteor-lighting.com

SPECIFICATION

PROJECT NAME

DATE

CATALOG #

QUANTITY

LA6	MODEL	LANCE 6		
	WATTAGE	60 Downlight: 30W Uplight: 30W	80¹ Downlight: 50W Uplight: 30W	100¹ Downlight: 50W Uplight: 50W
	CCT / CRI	278 2700K / CRI 85 309 3000K / CRI 93 408 4000K / CRI 85	279 2700K / CRI 93 358 3500K / CRI 85	308 3000K / CRI 85 359 3500K / CRI 93
UNV	VOLTAGE	UNV 120 – 277V		
	DIMMING	NOD Non-Dimming SPVS Superior 0-10V dims to 1% Single (Up/Down Together)	STVS Standard 0-10V dims to 10% Single (Up/Down Together) SPVD Superior 0-10V dims to 1% Dual (Up/Down Separately)	STVD Standard 0-10V dims to 10% Dual (Up/Down Separately) DMXD² DMX dims to 0.1% Dual (Up/Down Separately)
	BEAM ANGLE	Downlight 40 40°	60 60°	WD³ Wide
		Uplight 40 40°	60 60°	WD³ Wide
	FINISH	BLK Black BRZ Bronze	WHT White	GRY Gray
	ACCESSORIES	NO No Accessories LL^{4,6} Linear Lens	FW^{4,5} Forward Throw	WW^{4,6} Wall Wash 20°
	RATING	OUT⁷ Outdoor	NAT⁸ Natatorium Rated	MAR⁹ Marine Finish

¹ Option not compatible with DMX² DMX wiring is through 3 DMX Positive / Negative / Common wires³ Please factor in change in lumen output with WD -12%⁴ Please factor in change in lumen output of -20%⁵ Not compatible with 60° and WD option⁶ Not compatible with WD option⁷ Outdoor Rating: Coating and wiring will be changed to high UV resistant and corrosion resistant materials for long-term operation in outdoor environments⁸ Natatorium Rating: Coating and sealant will be changed to high corrosion resistant materials to prevent damage from long-term exposure to chlorine vapors⁹ Marine Rating: Uses high corrosion-resistant materials for the coating and sealant to prevent damage from long-term exposure to saltwater environment

TECHNICAL DETAILS

Electrical

- Downlight: 3,005 lm (30W), 5,010 lm (50W)
- Uplight: 3,005 lm (30W), 5,010 lm (50W)
- Power Input: Universal (120/277V)
- Operating Temperature: 14°F~104°F
- Surge Protection: Built-in is 2.5KV
- Power Factor Greater than 0.9

LED Features

- Color Temperature: 2700K, 3000K, 3500K, 4000K
- CRI 85, CRI 93
- Long lasting LED luminaire tested under TM21 lumen maintenance L70 @ 100,000 Hrs

Optics

- Precision molded high transmittance clear PC lens
- Beam Angle: 40°, 60°, Wide

Advanced Dimming

- Proprietary VX Driver™ is incorporated to all dimming options for video flicker-free lighting
- Standard 0-10V: Dims to 10%
Single Dimming (Controls Up/Down together)
Dual Dimming (Controls Up/Down separately)
- Superior 0-10V: Dim to 1 %
Single Dimming (Controls Up/Down together)
Dual Dimming (Controls Up/Down separately)
- DMXD: High resolution dims to 0.1%
(Supports ANSI E1.20 RDM protocol)
(Controls Up/Down separately)

Housing

- Diameter: Ø6.4"
- Height: 20" (50W), 22" (100W)
- Material: Extruded Aluminum, Tempered Glass
- Weight: 15.2 lbs (50W), 16.7lbs (100W)

Warranty

- 5-year limited warranty

Listing

- ETL Wet Location Listed
- CE
- FCC
- IP 65

PERFORMANCE SUMMARY*

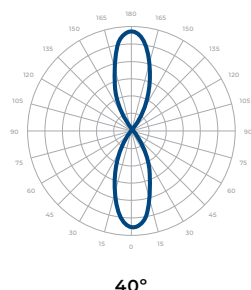
Delivered Lumens				
CCT/WATTAGE	2700K	3000K	3500K	4000K
30W DOWN	2,660lm	2,890lm	2,960lm	3,005lm
30W UP	2,660lm	2,890lm	2,960lm	3,005lm
50W DOWN	4,435lm	4,810lm	4,930lm	5,010lm
50W UP	4,435lm	4,810lm	4,930lm	5,010lm

Current Consumption		
WATTAGE / VOLT	120V	277V
60W	0.55A	0.24A
80W	0.73A	0.32A
100W	0.92A	0.4A

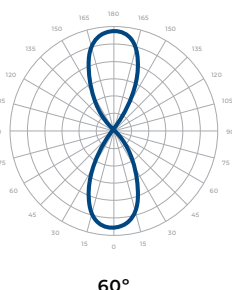
*Tolerance ±8%

PHOTOMETRICS

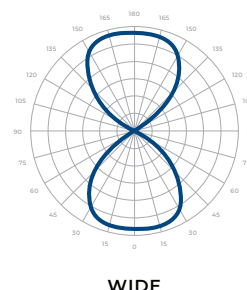
Below is a typical photometric representation of the Lance 6 fixture. Please download IES files to ensure exact photometric value.



40°



60°



WIDE

DMX REQUIREMENTS

The Lance 6 with DMX unit has **two channels** per fixture (1 to control uplight, 1 to control downlight). When placing an order, please indicate DMX address. (The DMX address will be listed on the back of the fixture). Do not connect more than 32 fixtures per DMX daisy chain.

DMX Address		
Fixture	Uplight (ex. X)	Downlight (ex. X+1)
#1	1	2
#2	3	4
#3	5	6

The fixture can be connected with 2 DMX positive / negative wires for connection. DMX cables **are not** included; please refer to compatible DMX cabling list for more information. The final fixture on each daisy chain should be terminated by the use of a DMX terminator purchased from a 3rd party or from Meteor.

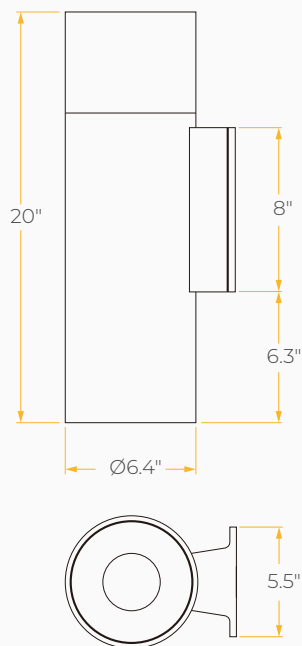
COMPATIBLE DMX CABLING LIST

DMX uses a cable consisting of two twisted pairs plus a shield to carry data. The cable must be specifically impedance matched for the digital DMX signal, meaning that microphone cable or other non-rated cable **must not be used to carry DMX**. Network cable (Cat5, 5e or 6 cable) may be used to carry DMX in an installation; however special consideration must be given to shielding and termination. Under no circumstances should solid core cable like Cat5 be terminated into a screw down connector.

Meteor recommends the use of Belden 9729 or Belden 9841 for DMX installation. Belden 9729/9841 is a two pair cable, which allows for a spare pair for 'out and back' type terminations if needed.

DIMENSIONS

60W



100W

